

Suteksan

Egypt



Certificates



General Information

01

PUMPED LIQUIDS

Clean.

Thin.

non-aggressive liquids without solid particles or fibers.

The max. sand content is 50 mg/lit.

02

INTERNATIONAL CERTIFICATES

All products meet international standards.

ISO 5199:2003

ISO 2858:2010

ISO 9906:2012

ISO 9001:2015

CE

SASO

03

CURVE CONDITIONS

The performance curves show pump performance at actual speed cf. standard motor range.

The speed of the motors is approximate:

4" and 6" motors: $n=2870 \text{ min}^{-1}$

8" to 12" motors: $n=2900 \text{ min}^{-1}$

The measurements were made with airless water at a temperature of 30°C.

The colored section of the table indicates the recommended performance range.

The performance curves are inclusive of possible losses $\pm 5\%$.

Rewindable motor

Single-phase: 220 - 240V/50Hz

Three-phase: 380 - 415V/50Hz

Equip with start control box or digital auto-control box Pumps are designed by casing stressed

NEMA dimension standards.

General Information

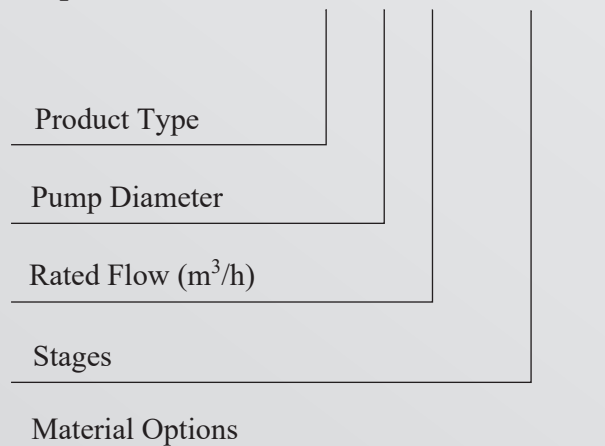
TYPE KEY



MODEL	SEP 8160 / 03 K		
H - M	96 - 67		
Q - m³/h	140 - 220		
HP	75	KW	55
Frequency	60 Hz		
Speed	3460 rpm		
S.N.	20XXXXXX-56XXX		

**STAINLESS STEEL SUBMERSIBLE PUMP
MADE IN EGYPT CE**

Example ——— SEP 8-160 / 03 - K



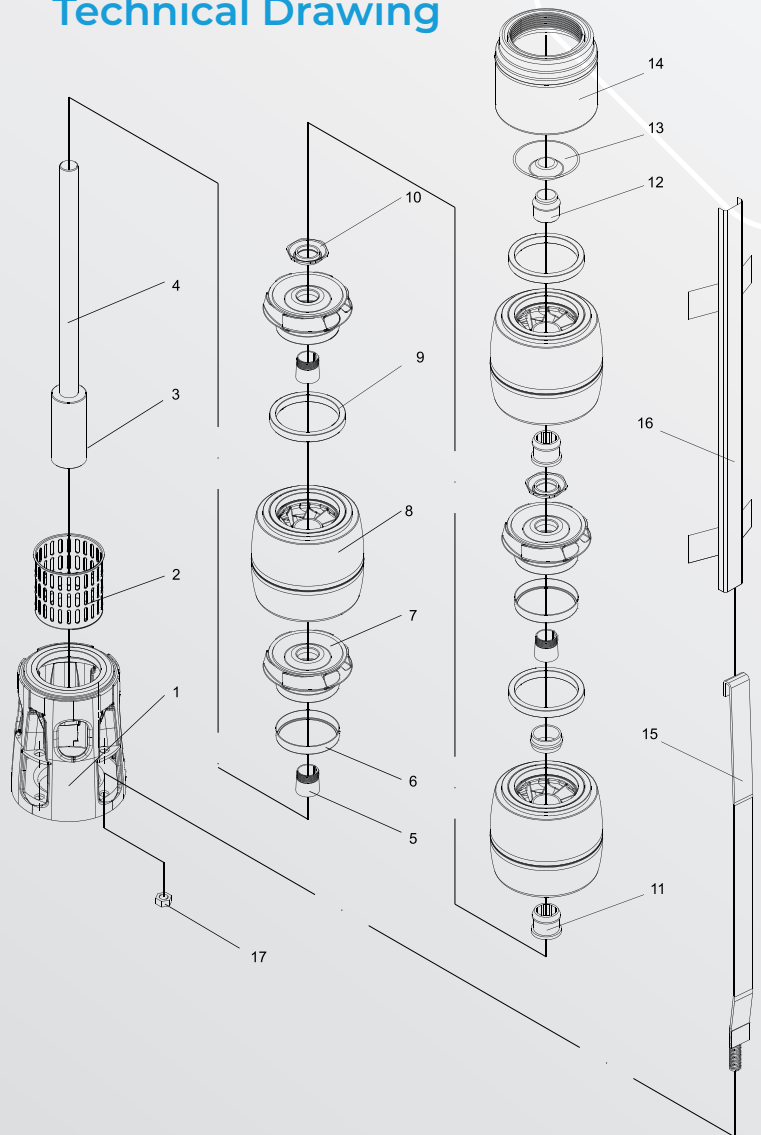
Material Data

Part List

N°	Part Name	Material
1	Suction Stage	Stainless Steel (AISI 304L)
2	Filter	Stainless Steel (AISI 304L)
3	Coupling	Stainless Steel (AISI 304L)
4	Pump Shaft	Stainless Steel (AISI 420 - 304L)
5	Impeller Lock	Stainless Steel (AISI 304L)
6	Impeller Rings	Stainless Steel (AISI 304L)
7	Impeller	Stainless Steel (AISI 304L)
8	Diffuser	Stainless Steel (AISI 304L)
9	Diffuser Ring	Rubber

N°	Part Name	Material
10	Nut For Impeller Lock	Stainless Steel (AISI 304L)
11	Shaft Bearing	Rubber
12	Shaft Stopper	Stainless Steel (AISI 304L)
13	Valve	Stainless Steel (AISI 304L)
14	Outlet	Stainless Steel (AISI 304L)
15	Strap	Stainless Steel (AISI 304L)
16	Cable Guard	Stainless Steel (AISI 304L)
17	Strap Nut	Stainless Steel (AISI 304L)

Technical Drawing



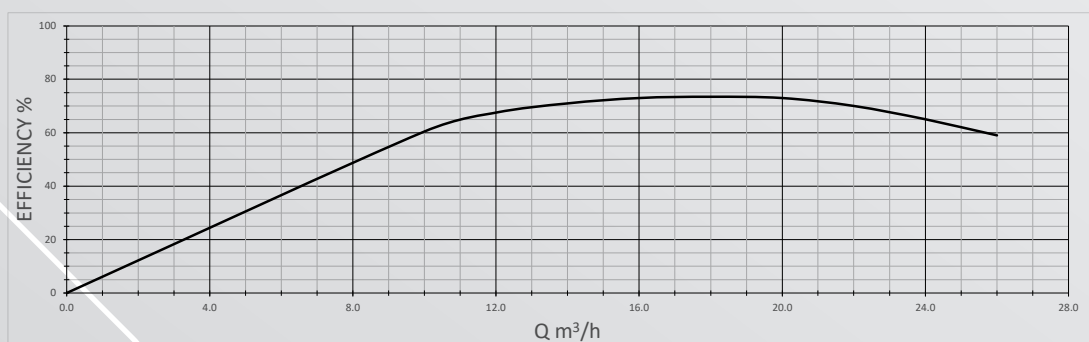
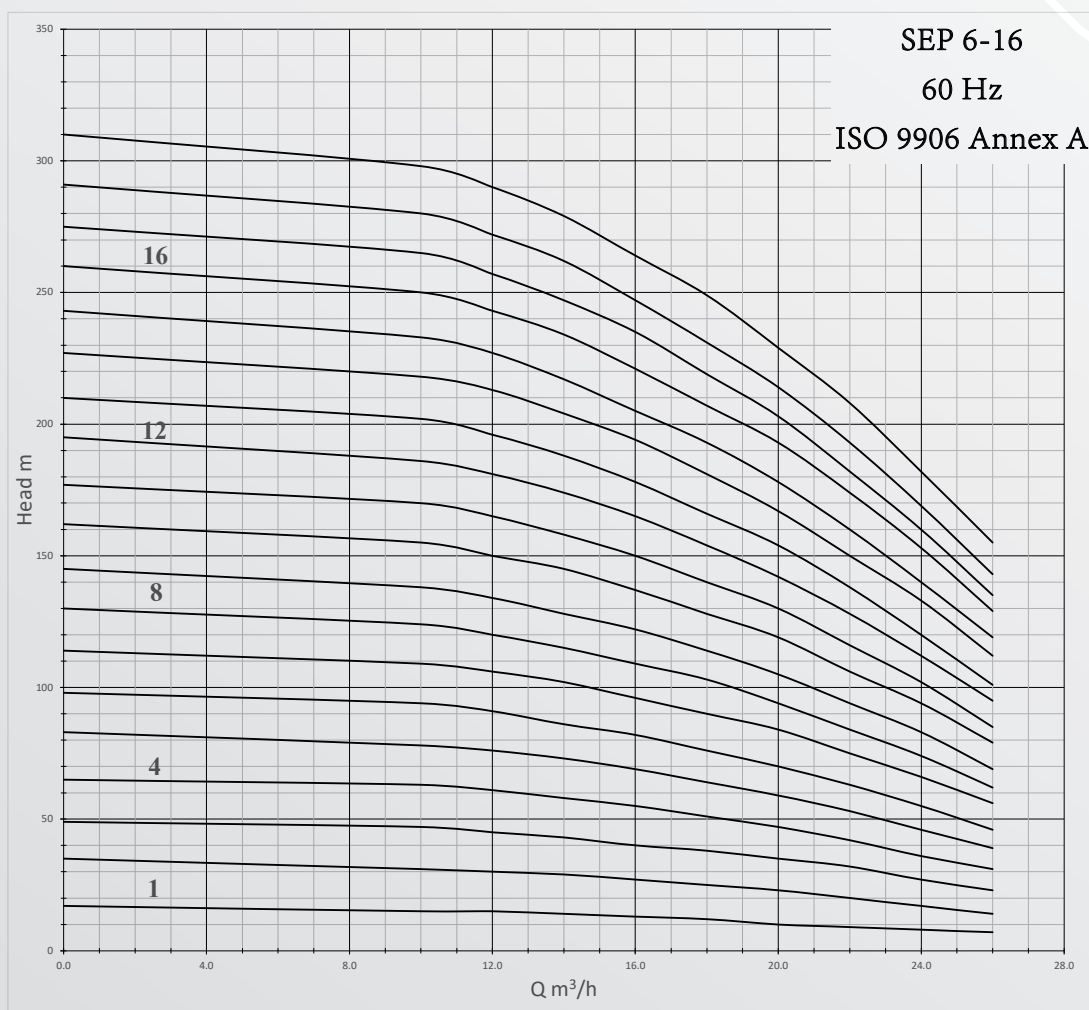
SEP 6" Pump Series



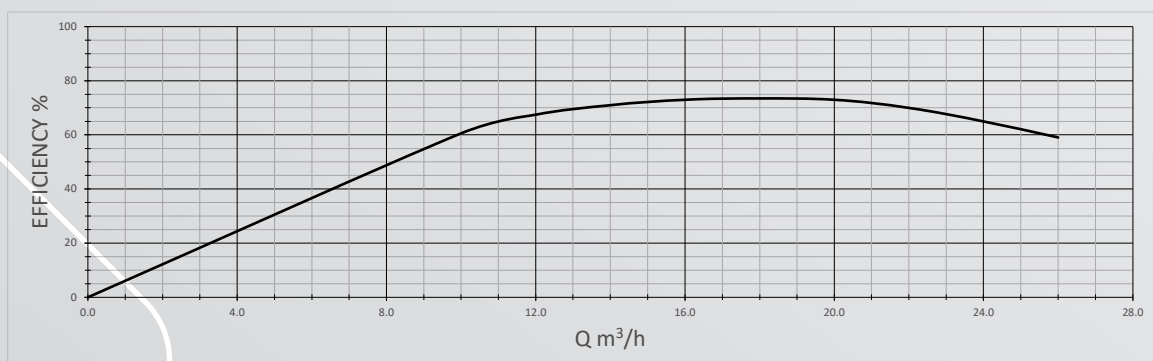
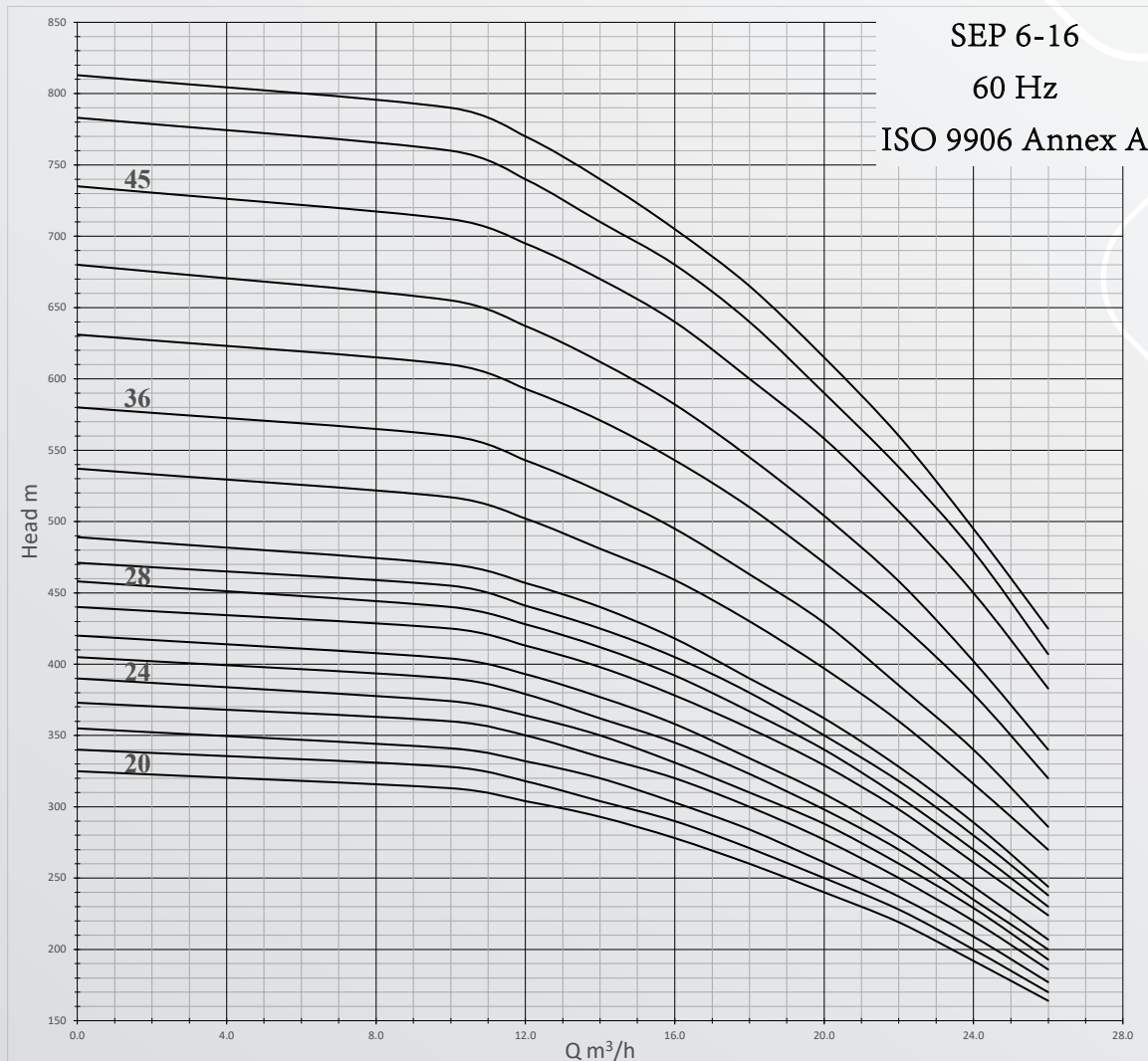
STAINLESS STEEL SUBMERSIBLE SEP 6-16 SERIES

Stainless Steel Submersible Pumps / SEP 6-16 Series																60 Hz
Pump Type	power		Flow										Pump Weight	Pump length	Outlet	
			m³/h	0.0	10.0	12.0	14.0	16.0	18.0	20.0	22.0	24.0			26.0	Inch
	Kw	Hp	l/s	0.00	2.78	3.33	3.89	4.44	5.00	5.56	6.11	6.67	7.22	Kg	cm	
SEP 6-16/ 01	1.1	1.5	Head m	17	15	15	14	13	12	10	9	8	7	5	30	2½"
SEP 6-16/ 02	2.2	3		35	31	30	29	27	25	23	20	17	14	6	36	
SEP 6-16/ 03	3	4		49	47	45	43	40	38	35	32	27	23	8	42	
SEP 6-16/ 04	4	5.5		65	63	61	58	55	51	47	42	36	31	9	48	
SEP 6-16/ 05	5.5	7.5		83	78	76	73	69	64	59	53	46	39	10	54	
SEP 6-16/ 06	5.5	7.5		98	94	91	86	82	76	70	63	55	46	11	61	
SEP 6-16/ 07	7.5	10		114	109	106	102	96	90	84	75	66	56	12	67	
SEP 6-16/ 08	7.5	10		130	124	120	115	109	103	94	84	74	62	13	74	
SEP 6-16/ 09	7.5	10		145	138	134	128	122	114	105	94	83	69	15	79	
SEP 6-16/ 10	9.2	12.5		162	155	150	145	137	128	119	106	94	79	16	85	
SEP 6-16/ 11	9.2	12.5		177	170	165	158	150	140	130	116	102	85	17	91	
SEP 6-16/ 12	11	15		195	186	181	174	165	154	142	128	112	95	18	97	
SEP 6-16/ 13	11	15		210	202	196	188	178	166	154	138	120	101	20	103	
SEP 6-16/ 14	13	17.5		227	218	213	204	194	181	167	150	133	112	21	109	
SEP 6-16/ 15	13	17.5		243	233	227	217	205	193	178	160	140	119	22	115	
SEP 6-16/ 16	15	20		260	250	243	234	221	207	193	174	153	129	23	122	
SEP 6-16/ 17	15	20		275	265	257	247	235	219	203	182	160	135	24	128	
SEP 6-16/ 18	15	20		291	280	272	262	247	231	214	193	169	143	26	134	
SEP 6-16/ 19	18.5	25		310	298	290	279	264	249	229	208	182	155	27	140	
SEP 6-16/ 20	18.5	25		325	313	304	293	278	260	240	219	192	164	28	146	
SEP 6-16/ 21	18.5	25		340	328	318	304	290	271	250	228	200	170	29	152	
SEP 6-16/ 22	18.5	25		355	341	332	320	303	284	261	237	209	177	30	158	
SEP 6-16/ 23	22	30		373	360	350	335	320	300	277	250	220	186	32	164	
SEP 6-16/ 24	22	30		390	374	364	350	331	310	288	260	229	193	33	170	
SEP 6-16/ 25	22	30		405	390	379	362	345	323	298	270	235	200	34	176	
SEP 6-16/ 26	22	30		420	404	393	377	358	334	309	279	244	207	35	183	
SEP 6-16/ 27	26	35		440	425	413	398	378	355	329	298	261	224	36	189	
SEP 6-16/ 28	26	35		458	440	428	412	392	367	340	307	270	230	38	195	
SEP 6-16/ 29	26	35		471	455	441	425	405	380	350	318	280	238	39	201	
SEP 6-16/ 30	26	35		489	470	457	440	418	390	362	328	289	244	40	207	
SEP 6-16/ 33	30	40	537	517	502	481	459	430	397	360	316	270	44	225		
SEP 6-16/ 36	30	40	580	560	543	521	495	463	429	385	340	286	47	244		
SEP 6-16/ 39	37	50	631	610	593	571	543	510	471	429	379	320	51	262		
SEP 6-16/ 42	37	50	680	655	637	612	582	545	504	458	402	340	54	280		
SEP 6-16/ 45	45	60	735	712	695	670	640	600	558	507	450	383	58	298		
SEP 6-16/ 48	45	60	783	760	740	710	680	640	590	538	479	407	62	317		
SEP 6-16/ 50	45	60	813	790	770	740	705	665	615	560	495	425	64	329		

STAINLESS STEEL SUBMERSIBLE SEP 6-16 SERIES



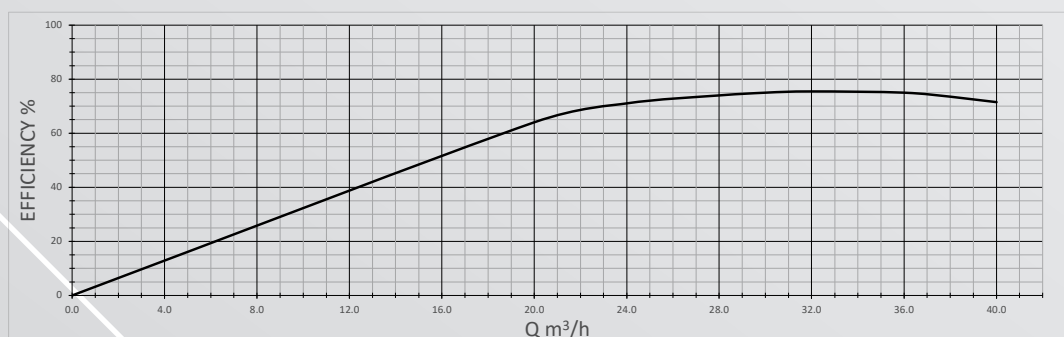
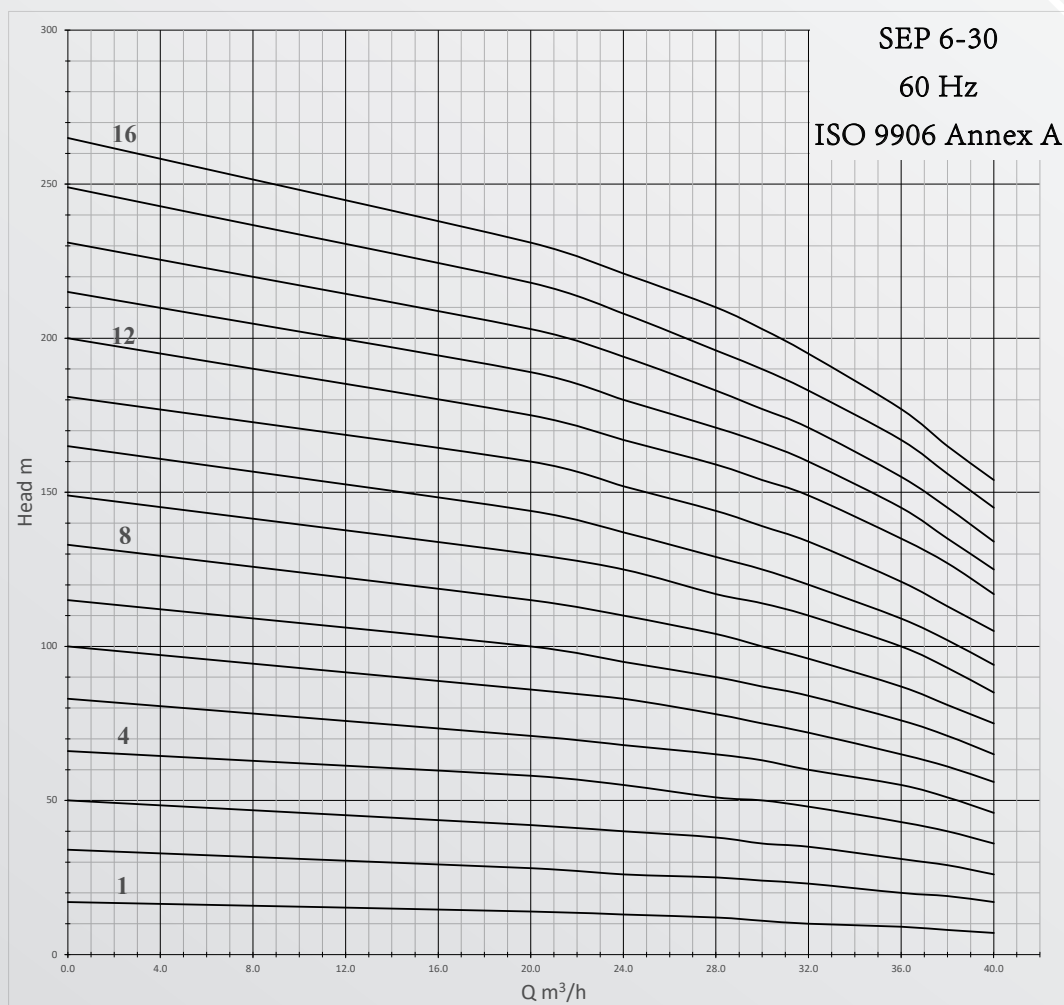
STAINLESS STEEL SUBMERSIBLE SEP 6-16 SERIES



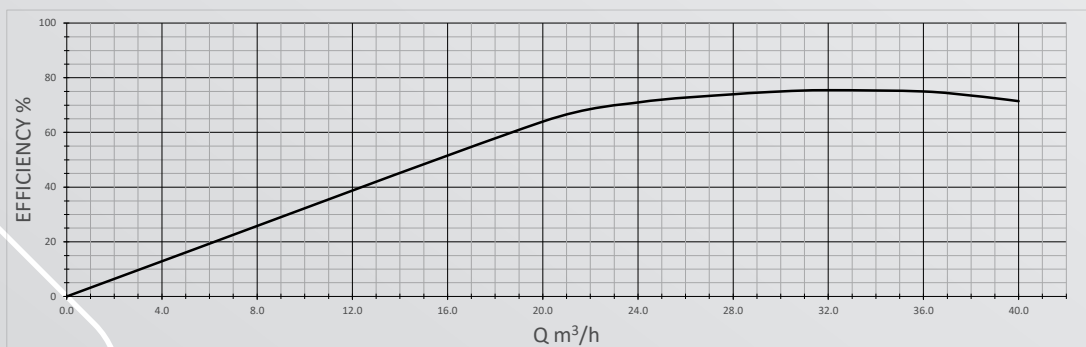
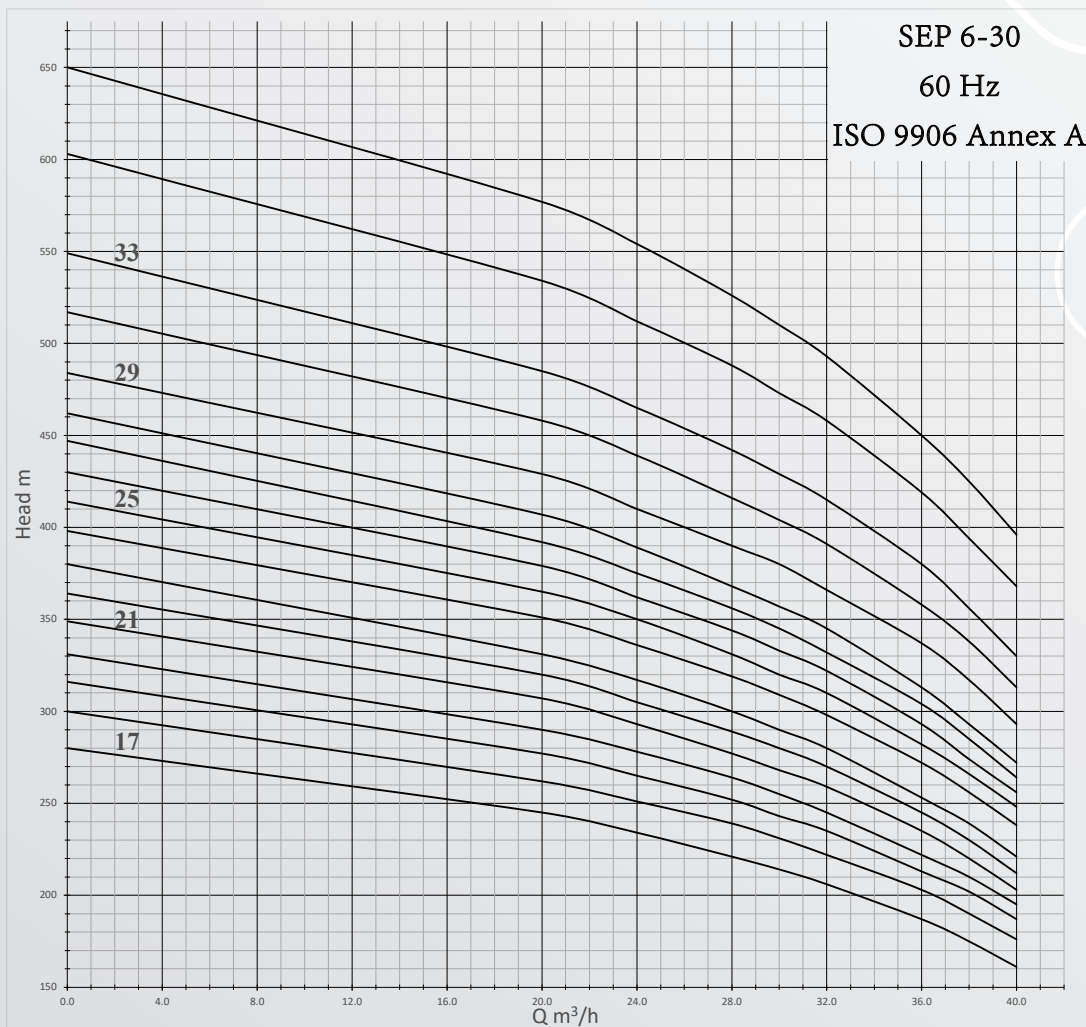
STAINLESS STEEL SUBMERSIBLE SEP 6-30 SERIES

Stainless Steel Submersible Pumps / SEP 6-30 Series														60 Hz	
Pump Type	power		Flow									Pump Weight	Pump length	Outlet	
	Kw	Hp	m ³ /h	0.0	20.0	24.0	28.0	30.0	32.0	36.0	38.0				40.0
			l/s	0.00	5.56	6.67	7.78	8.33	8.89	10.00	10.56	11.11			
SEP 6-30/ 01	1.5	2	Head m	17	14	13	12	11	10	9	8	7	6	34	3"
SEP 6-30/ 02	3	4		34	28	26	25	24	23	20	19	17	8	43	
SEP 6-30/ 03	4	5.5		50	42	40	38	36	35	31	29	26	10	53	
SEP 6-30/ 04	5.5	7.5		66	58	55	51	50	48	43	40	36	13	62	
SEP 6-30/ 05	7.5	10		83	71	68	65	63	60	55	51	46	15	72	
SEP 6-30/ 06	9.2	12.5		100	86	83	78	75	72	65	61	56	17	82	
SEP 6-30/ 07	9.2	12.5		115	100	95	90	87	84	76	71	65	20	91	
SEP 6-30/ 08	11	15		133	115	110	104	100	96	87	81	75	22	101	
SEP 6-30/ 09	13	17.5		149	130	125	117	114	110	100	93	85	24	110	
SEP 6-30/ 10	13	17.5		165	144	137	129	125	120	109	102	94	27	120	
SEP 6-30/ 11	15	20		181	160	152	144	139	134	121	113	105	29	130	
SEP 6-30/ 12	18.5	25		200	175	167	159	154	149	135	127	117	31	139	
SEP 6-30/ 13	18.5	25		215	189	180	171	166	160	145	135	125	33	149	
SEP 6-30/ 14	18.5	25		231	203	194	183	177	171	155	145	134	36	158	
SEP 6-30/ 15	22	30		249	218	208	196	190	183	167	156	145	38	168	
SEP 6-30/ 16	22	30		265	231	221	210	203	195	177	165	154	40	178	
SEP 6-30/ 17	22	30		280	245	234	221	214	206	187	175	161	43	187	
SEP 6-30/ 18	26	35		300	262	251	239	231	222	203	190	176	45	197	
SEP 6-30/ 19	26	35		316	277	265	252	243	235	213	202	187	47	206	
SEP 6-30/ 20	26	35		331	290	278	264	255	245	222	210	195	50	216	
SEP 6-30/ 21	30	40		349	307	293	277	268	259	235	220	203	52	226	
SEP 6-30/ 22	30	40		364	320	305	289	280	270	245	230	212	54	235	
SEP 6-30/ 23	30	40		380	331	317	300	290	280	253	239	221	56	245	
SEP 6-30/ 24	37	50		398	351	336	319	309	298	272	256	238	59	254	
SEP 6-30/ 25	37	50		414	365	350	331	320	310	282	266	248	61	297	
SEP 6-30/ 26	37	50		430	379	362	344	333	322	293	274	256	71	306	
SEP 6-30/ 27	37	50		447	392	375	356	345	332	304	285	264	74	316	
SEP 6-30/ 28	37	50		462	407	389	368	357	345	313	293	272	76	325	
SEP 6-30/ 29	45	60		484	429	410	390	380	366	337	317	293	78	335	
SEP 6-30/ 31	45	60		517	458	439	416	404	391	358	338	313	83	354	
SEP 6-30/ 33	45	60		549	485	465	442	429	415	380	356	330	88	373	
SEP 6-30/ 36	55	75		603	534	512	488	473	458	419	394	368	94	402	
SEP 6-30/ 39	55	75		650	577	554	526	510	493	450	425	396	101	431	

STAINLESS STEEL SUBMERSIBLE SEP 6-30 SERIES



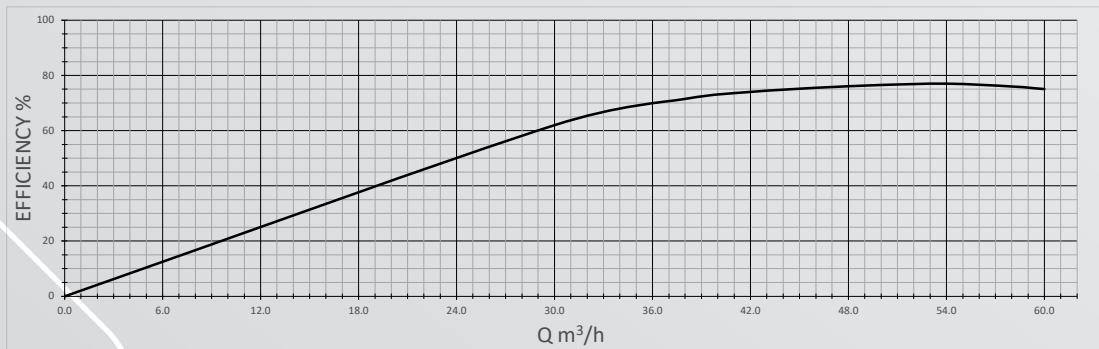
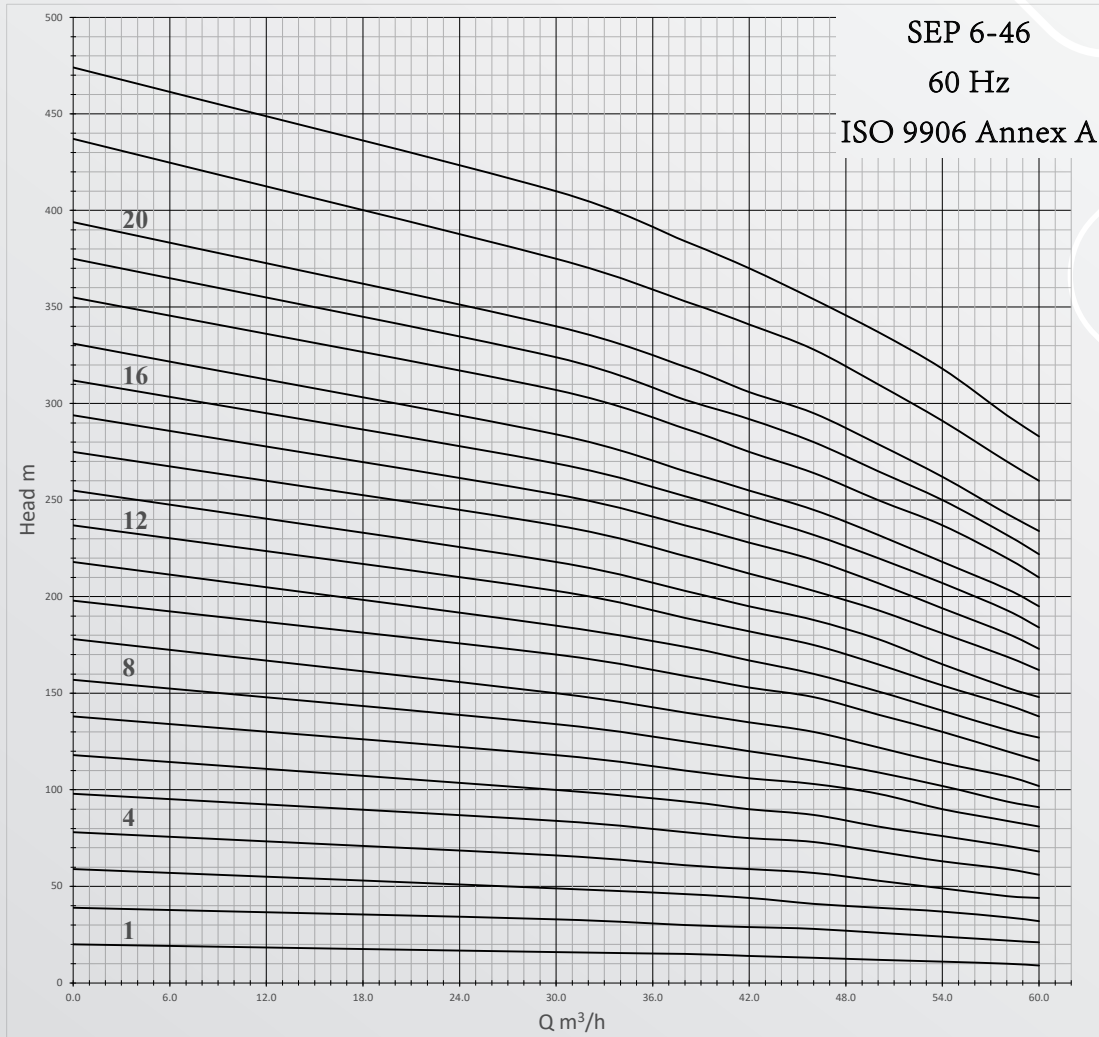
STAINLESS STEEL SUBMERSIBLE SEP 6-30 SERIES



STAINLESS STEEL SUBMERSIBLE SEP 6-46 SERIES

Stainless Steel Submersible Pumps / SEP 6-46 Series														60 Hz	
Pump Type	power		Flow										Pump Weight	Pump length	Outlet
	Kw	Hp	m ³ /h	0.0	30.0	38.0	42.0	46.0	50.0	54.0	58.0	60.0			
	l/s	0.00	8.33	10.56	11.67	12.78	13.89	15.00	16.11	16.67	Kg	cm	Inch		
SEP 6-46/ 01	3	4	Head m	20	16	15	14	13	12	11	10	9	6	35	3"
SEP 6-46/ 02	5.5	7.5		39	33	30	29	28	26	24	22	21	8	47	
SEP 6-46/ 03	7.5	10		59	49	46	44	41	39	37	34	32	10	58	
SEP 6-46/ 04	9.2	12.5		78	66	61	59	57	53	49	45	44	13	70	
SEP 6-46/ 05	13	17.5		98	84	78	75	73	68	63	59	56	15	81	
SEP 6-46/ 06	15	20		118	100	94	90	87	81	76	71	68	17	93	
SEP 6-46/ 07	18.5	25		138	118	110	106	103	98	90	84	81	20	104	
SEP 6-46/ 08	18.5	25		157	134	125	120	115	109	102	94	91	22	116	
SEP 6-46/ 09	22	30		178	150	140	135	130	122	114	107	102	25	127	
SEP 6-46/ 10	26	35		198	170	159	153	148	139	130	120	115	27	138	
SEP 6-46/ 11	26	35		218	185	174	167	160	151	141	131	127	30	150	
SEP 6-46/ 12	30	40		237	203	189	182	175	165	154	144	138	32	161	
SEP 6-46/ 13	30	40		255	218	203	195	188	178	165	153	148	35	173	
SEP 6-46/ 14	37	50		275	237	221	212	203	193	181	169	162	37	184	
SEP 6-46/ 15	37	50		294	253	237	228	219	207	194	181	173	39	196	
SEP 6-46/ 16	37	50		312	269	252	242	232	220	207	193	184	42	207	
SEP 6-46/ 17	37	50		331	284	265	255	245	232	218	204	195	44	219	
SEP 6-46/ 18	45	60		355	307	287	275	264	250	237	220	210	47	230	
SEP 6-46/ 19	45	60		375	324	302	292	280	265	250	232	222	49	241	
SEP 6-46/ 20	45	60		394	340	319	306	295	279	262	243	234	52	253	
SEP 6-46/ 22	55	75		437	375	353	341	328	310	291	270	260	57	276	
SEP 6-46/ 24	55	75		474	410	384	370	354	337	318	294	283	70	322	4"

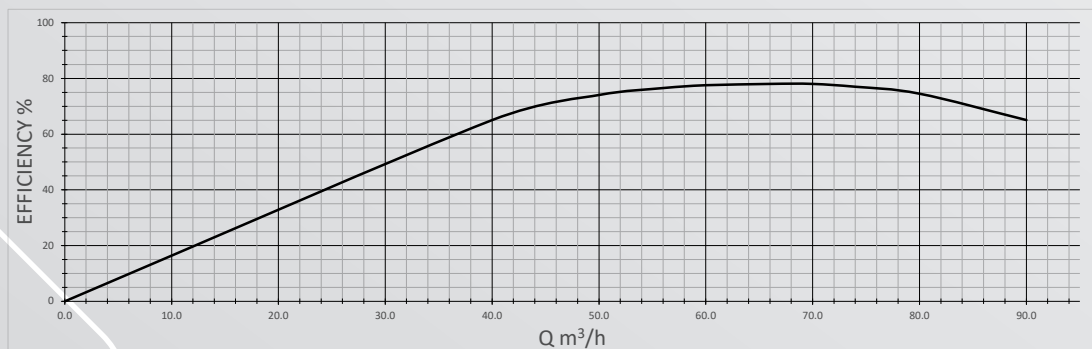
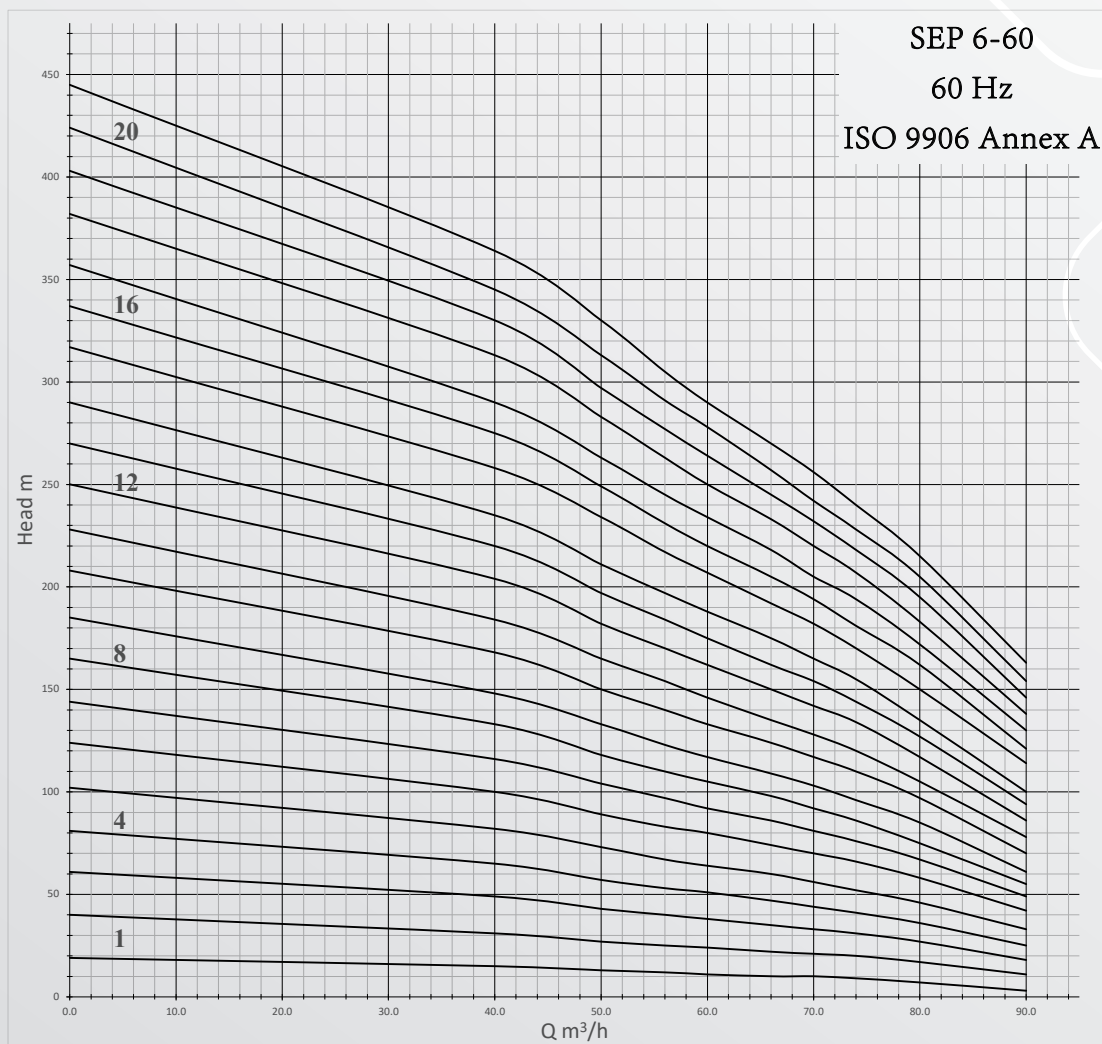
STAINLESS STEEL SUBMERSIBLE SEP 6-46 SERIES



STAINLESS STEEL SUBMERSIBLE SEP 6-60 SERIES

Stainless Steel Submersible Pumps / SEP 6-60 Series															60 Hz	
Pump Type	power		Flow											Pump Weight	Pump length	Outlet
			m³/h	0.0	40.0	50.0	56.0	60.0	66.0	70.0	74.0	80.0	90.0			
	Kw	Hp	l/s	0.00	11.11	13.89	15.56	16.67	18.33	19.44	20.56	22.22	25.00	Kg	cm	Inch
SEP 6-60/ 01	4	5.5	Head m	19	15	13	12	11	10	10	9	7	3	6	35	4"
SEP 6-60/ 02	5.5	7.5		40	31	27	25	24	22	21	20	17	11	8	47	
SEP 6-60/ 03	9.2	12.5		61	49	43	40	38	35	33	31	27	18	10	58	
SEP 6-60/ 04	11	15		81	65	57	53	51	47	44	41	36	25	13	70	
SEP 6-60/ 05	13	17.5		102	82	73	67	64	60	56	52	46	33	15	81	
SEP 6-60/ 06	18.5	25		124	100	89	83	80	74	70	66	58	42	17	93	
SEP 6-60/ 07	18.5	25		144	116	104	97	92	86	81	76	67	49	20	104	
SEP 6-60/ 08	22	30		165	133	118	110	105	98	92	86	75	55	22	116	
SEP 6-60/ 09	26	35		185	148	133	123	117	109	103	96	85	61	25	127	
SEP 6-60/ 10	26	35		208	168	150	140	133	124	117	110	97	70	27	138	
SEP 6-60/ 11	30	40		228	184	165	154	146	135	128	120	105	78	30	150	
SEP 6-60/ 12	37	50		250	204	182	170	162	150	142	134	117	86	32	161	
SEP 6-60/ 13	37	50		270	220	197	184	175	162	154	144	127	94	35	173	
SEP 6-60/ 14	37	50		290	235	211	197	188	175	165	155	135	100	37	184	
SEP 6-60/ 15	45	60		317	258	234	217	207	192	182	170	150	114	39	196	
SEP 6-60/ 16	45	60		337	275	249	231	220	205	194	181	162	121	42	207	
SEP 6-60/ 17	45	60		357	290	263	245	234	218	205	194	172	130	44	219	
SEP 6-60/ 18	55	75		382	313	283	263	250	233	220	207	183	138	47	230	
SEP 6-60/ 19	55	75		403	330	297	277	264	245	232	218	195	146	49	241	
SEP 6-60/ 20	55	75		424	345	313	291	278	257	242	228	205	154	52	253	
SEP 6-60/ 21	63	85		445	364	330	305	290	270	256	240	215	163	54	264	

STAINLESS STEEL SUBMERSIBLE SEP 6-60 SERIES



Head losses in plastic pipes

Upper figures indicate the velocity of water in m/sec.

Lower figures indicate head loss in metres per 100 metres of straight pipes.

Quantity of water			PELM/PEH PN 10											
m ³ /h	Litres/min.	Litres/sec.	PELM					PEH						
			25	32	40	50	63	75	90	110	125	140	160	180
			20.4	26.2	32.6	40.8	51.4	61.4	73.6	90.0	102.2	114.6	130.8	147.2
0.6	10	0.16	0.49 1.8	0.30 0.66	0.19 0.27	0.12 0.085								
0.9	15	0.25	0.76 4.0	0.46 1.14	0.3 0.6	0.19 0.18	0.12 0.63							
1.2	20	0.33	1.0 6.4	0.61 2.2	0.39 0.9	0.25 0.28	0.16 0.11							
1.5	25	0.42	1.3 10.0	0.78 3.5	0.5 1.4	0.32 0.43	0.2 0.17	0.14 0.074						
1.8	30	0.50	1.53 13.0	0.93 4.6	0.6 1.9	0.38 0.57	0.24 0.22	0.17 0.092						
2.1	35	0.58	1.77 16.0	1.08 6.0	0.69 2.0	0.44 0.70	0.28 0.27	0.2 0.12						
2.4	40	0.67	2.05 22.0	1.24 7.5	0.80 3.3	0.51 0.93	0.32 0.35	0.23 0.16	0.16 0.063					
3.0	50	0.83	2.54 37.0	1.54 11.0	0.99 4.8	0.63 1.40	0.4 0.50	0.28 0.22	0.2 0.09					
3.6	60	1.00	3.06 43.0	1.85 15.0	1.2 6.5	0.76 1.90	0.48 0.70	0.34 0.32	0.24 0.13	0.16 0.050				
4.2	70	1.12	3.43 50.0	2.08 18.0	1.34 8.0	0.86 2.50	0.54 0.83	0.38 0.38	0.26 0.17	0.18 0.068				
4.8	80	1.33	2.47 25.0	1.59 10.5	1.02 3.00	0.64 1.20	0.45 0.50	0.31 0.22	0.2 0.084					
5.4	90	1.50	2.78 30.0	1.8 12.0	1.15 3.50	0.72 1.30	0.51 0.57	0.35 0.26	0.24 0.092	0.18 0.05				
6.0	100	1.67	3.1 39.0	2.0 16.0	1.28 4.6	0.8 1.80	0.56 0.73	0.39 0.30	0.26 0.12	0.2 0.07				
7.5	125	2.08	3.86 50.0	2.49 24.0	1.59 6.6	1.00 2.50	0.70 1.10	0.49 0.50	0.33 0.18	0.25 0.10	0.20 0.055			
9.0	150	2.50	3.00 33.0	1.91 8.6	1.20 3.5	0.84 1.40	0.59 0.63	0.39 0.24	0.30 0.13	0.24 0.13	0.2 0.075			
10.5	175	2.92	3.5 38.0	2.23 11.0	1.41 4.3	0.99 1.80	0.69 0.78	0.46 0.30	0.36 0.18	0.28 0.09				
12	200	3.33	3.99 50.0	2.55 14.0	1.60 5.5	1.12 2.40	0.78 1.0	0.52 0.40	0.41 0.22	0.32 0.12	0.25 0.065	0.20		
15	250	4.17	3.19 21.0	2.01 8.0	1.41 3.70	1.41 3.70	0.98 1.50	0.66 0.57	0.51 0.34	0.40 0.18	0.31 0.105	0.24 0.06	0.25	0.06
18	300	5.00	3.82 28.0	2.41 10.5	1.69 4.60	1.18 4.60	1.18 1.95	0.78 0.77	0.61 0.45	0.48 0.25	0.37 0.13	0.29 0.085	0.06	0.085
24	400	6.67	3.21 19.0	2.25 8.0	1.57 3.60	1.05 3.60	1.05 1.40	0.81 0.78	0.65 0.44	0.50 0.23	0.39 0.15	0.24	0.25	0.065
30	500	8.33	4.01 28.0	2.81 11.5	1.96 5.0	1.31 2.0	1.02 1.20	0.81 0.63	0.62 0.33	0.49 0.21	0.31	0.06	0.06	0.085
36	600	10.0	4.82 37.0	3.38 15.0	2.35 6.6	1.57 2.60	1.22 1.50	0.97 0.82	0.74 0.45	0.59 0.28	0.45	0.28	0.085	0.085
42	700	11.7	5.64 47.0	3.95 24.0	2.75 8.0	1.84 3.50	1.43 1.90	1.13 1.10	0.87 0.60	0.69 0.40	0.40	0.28	0.065	0.085
48	800	13.3	4.49 26.0	3.13 11.0	2.09 4.5	1.62 2.60	1.29 1.40	0.99 0.81	0.78 0.48	0.58	0.31	0.06	0.065	0.085
54	900	15.0	5.07 33.0	3.53 13.5	2.36 5.5	1.83 3.20	1.45 1.70	1.12 0.95	0.88 0.58	0.63	0.36	0.21	0.065	0.085
60	1000	16.7	5.64 40.0	3.93 16.0	2.63 6.7	1.96 3.90	1.57 2.2	1.22 1.2	0.97 0.75	0.74	0.59	0.28	0.065	0.085
75	1250	20.8	4.89 25.0	3.27 9.0	2.54 5.0	2.02 3.0	1.55 1.6	1.22 0.95	0.96	0.75	0.59	0.28	0.065	0.085
90	1500	25.0	5.88 33.0	3.93 13.0	3.05 8.0	2.42 4.1	1.86 2.3	1.47 1.40	1.12	0.88	0.63	0.36	0.21	0.065
105	1750	29.2	6.86 44.0	4.59 17.5	3.56 9.7	2.83 5.7	2.17 3.2	1.72 1.9	1.40	1.12	0.88	0.63	0.36	0.21
120	2000	33.3	5.23 23.0	4.06 13.0	3.23 7.0	2.48 4.0	1.96	1.60	1.24	0.96	0.75	0.59	0.28	0.065
150	2500	41.7	6.55 34.0	5.08 18.0	4.04 10.5	3.10 6.0	2.45	2.00	1.60	1.24	0.96	0.75	0.59	0.28
180	3000	50.0	7.86 45.0	6.1 27.0	4.85 14.0	3.72 7.6	2.94	2.40	1.96	1.60	1.24	0.96	0.75	0.59
240	4000	66.7	8.13 43.0	6.47 24.0	4.96 13.0	3.92	3.20	2.60	2.10	1.70	1.30	1.00	0.70	0.50
300	5000	83.3	8.08 33.0	6.2 18.0	4.89	4.00	3.30	2.70	2.20	1.80	1.40	1.00	0.70	0.50

The table is based on a nomogram.

Roughness: K = 0.01 mm.

Water temperature: t = 10 °C.

CABLE SELECTION TABLE

Maximum Lengths in Meters (m) for 400V/50Hz, 5% Voltage Drop, 30°C Ambient Temperature IEC Publication 364-5-523 (1983) Table 52-B1																	
DIRECT ON LINE (DOL)																	
Motor Power		Cable Size mm ² , Copper Wire, Rated Insulation at 70°C															
KW	HP	2,5	4	6	10	16	25	35	50	70	95	120	150	185	240	300	400
4	5,5	180	290	430	710												
5,5	7,5	130	210	320	530	830											
7,5	10	90	150	230	390	610	940										
9,3	12,5	80	130	190	320	510	770										
11	15	60	100	160	270	430	650	890									
13	17,5		90	140	230	370	560	770									
15	20		80	120	200	320	490	680	920								
18,5	25			100	160	260	400	540	740	980							
22	30				140	220	340	470	630	840							
26	35				120	190	290	390	540	720	920						
30	40					160	250	340	470	620	790	940					
37	50					130*	200	280	380	500	640	760	890	1020			
45	60						170	240	330	440	570	690	810	940			
52	70						150*	210	290	390	500	600	710	820	980		
55	75						140*	190	270	360	470	560	660	770	910		
60	80							180	250	340	440	530	630	730	870	1010	
67	90							160*	220	300	390	460	550	630	750	860	1000
75	100								200*	270	350	420	490	570	680	780	910
83	111								180*	250	320	390	450	530	630	730	850
85	114									230	290	350	410	480	570	650	750
93	125									220*	280	340	390	460	550	620	720
110	150										220	270	310	360	420	480	550
130	175										200*	240	280	330	390	440	520
150	200											200*	240	280	330	380	440
185	250												210*	250	280	330	390
STAR - DELTA (YΔ)																	
Motor Power		Cable Size mm ² , Copper Wire, Rated Insulation at 70°C															
KW	HP	2,5	4	6	10	16	25	35	50	70	95	120	150	185	240	300	400
4	5,5	270	430	640													
5,5	7,5	190	310	480	790												
7,5	10	130	220	340	580	910											
9,3	12,5	120	190	280	480	760											
11	15	90	150	240	400	640	970										
13	17,5	70	130	210	340	550	840										
15	20	70	120	180	300	480	730	1020									
18,5	25	60	90	150	240	390	600	810									
22	30		70	120	210	330	510	700	940								
26	35		60*	100	180	280	430	580	810								
30	40			90	150	240	370	510	700	930							
37	50				120	190	300	420	570	750	960						
45	60				100	160	250	360	490	660	850						
52	70				90*	150	220	310	430	580	750	900					
55	75					130	210	280	400	540	700	840	990				
60	80					120	190	270	370	510	660	790	940				
67	90					100	180	240	330	450	580	690	820	940			
75	100					90*	150	210	300	400	520	630	730	850	1020		
83	111						130	190	270	370	480	580	670	790	940		
85	114						130*	180	250	340	430	520	610	720	850	970	
93	125						120*	160	240	330	420	510	580	690	820	930	
110	150							130*	190	250	330	400	460	540	630	720	820
130	175								160*	220	300	360	420	490	580	660	780
150	200								150*	190	250	300	360	420	490	570	660
185	250										190*	240	270	310	370	420	490

* For Individual Contactor



SUBMERSIBLE PUMPS & MOTORS

SUTEKSAN EGYPT PUMPS



**EGYPT - CAIRO - 10TH OF RAMADAN CITY
B135-A5 THIRD INDUSTRIAL ZONE
POSTCODE: 44629**



WWW.SUTEKSANEGYPT.COM



**CEO.SUTEKSANEGYPT@GMAIL.COM
SALESDEP.SUTEKSANEGYPT@GMAIL.COM**



**01050500960 - 01033005736
01050500961 - 01050500962**



0554413099 - 0554413080

